

*Privilege*



*STANDARD SPECIFICATION*  
*PRELIMINARY*

PRIVILEGE  
Signature **580**

# STANDARD SPECIFICATION




---

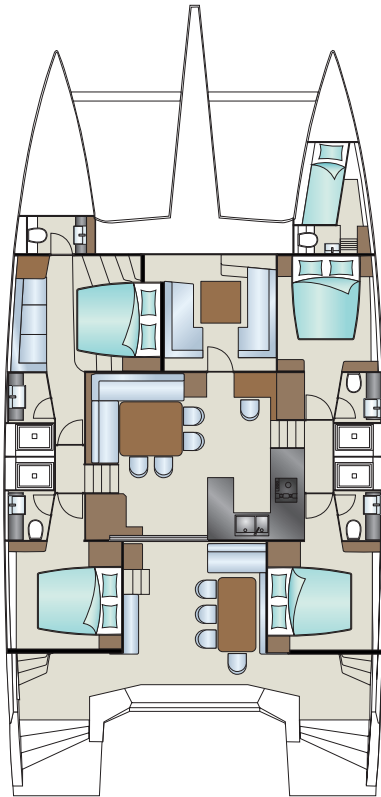
Mainsail	121 m <sup>2</sup>	1,302 sqft
Genoa	92 m <sup>2</sup>	990 sqft
Staysail (option)	51 m <sup>2</sup>	549 sqft
Gennaker (option)	176 m <sup>2</sup>	1,894 sqft
Mast length	27.57 m	90'45Z
LOA	18.65 m	61'2"
Hull length	17.90 m	58'9"
LWL	17.98 m	58'12"
Beam	9.18 m	30'1"
Draft	1.75 m	5'9"
Displacement light ship	29 t	63,934 lbs
Displacement full load	35 t	77,162 lbs
Fuel tank	1000 l	264 gal
Fresh water	1000 l	264 gal
Engine Diesel	2 × 55 kW	2 × 75 HP
CE Certificate	A -12	
Design	Cabinet Marc Lombard	
Interior	Franck Darnet Design	

PRIVILEGE  
Signature **580**

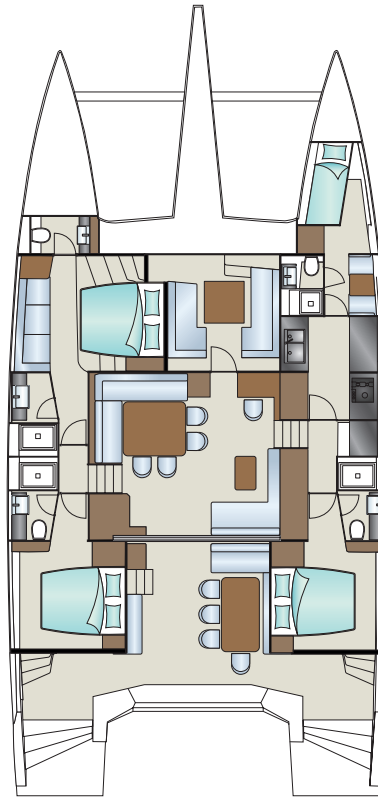
# DECK & FLYBRIDGE LAYOUT

## CHOOSE YOUR LAYOUT

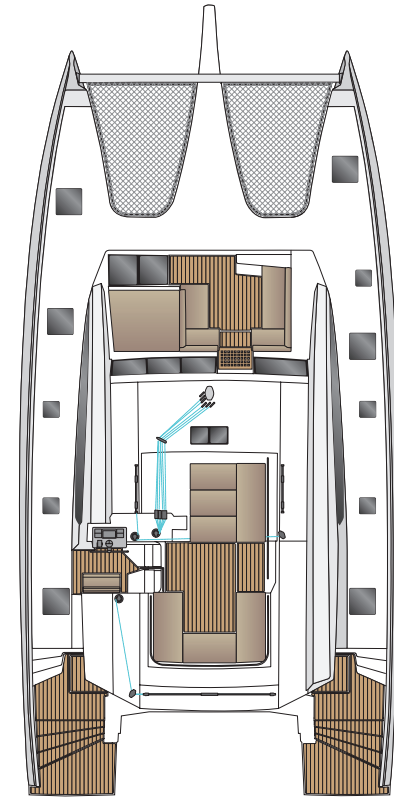
Lowerdeck Standard



Lowerdeck Galley Down



Maindeck



PRIVILEGE  
Signature 580

# STANDARD SPECIFICATION

## GENERAL, HULL, DECK

### General

- › Declaration of Conformity

### Hull

- › GRP hull, built in polyester resin vacuum infusion with PVC sandwich core and isophthalic gelcoat, colour: Signal White (RAL 9003), 1st layer in vinylester resin
- › False bow and transom crash box
- › Structural bulkheads built in vacuum infusion with PVC sandwich core laminated to hull and deck
- › Added non-structural keels to improve hydrostatics

### Deck

- › GRP deck, built in polyester resin vacuum infusion with PVC sandwich core and isophthalic gelcoat, colour: Signal White (RAL 9607), 1st layer vinylester resin
- › Aft cockpit with L-shape bench on starboard, bench on portside, halyard locker (at helmstation) and cockpit seat in aft cockpit. Access from cockpit to bathing platform/tender lift
- › Fwd cockpit with two benches, cup holder, "table" integrated in deck, stairs to fwd/side deck and fwd companionway to fwd ps cabin with watertight door

- › Each side: 2 big flush hatches in fwd cabin, 1 small flush hatch per head, 1 big flush hatch for aft cabin, 1 portlight for fwd cabin in fwd cockpit and 1 portlight for aft cabin in aft cockpit
- › Deckswindows for aft cabins at stairs from sidedeck to transom and for fwd cabins to centerline in between hulls
- › Teak stairs for access to hulldeck both sides and from sidedeck to helmstation on portside
- › Flydeck with seating area with integrated flydeck lockers, cupholders, stainless steel backrest and separate fwd laying area with stainless steel railing - access from helmstation on portside with teak stairs. Access to main boom with mainsail
- › Raised helmstation on portside with double bench, instrument board, boat controls, winches with footrest, glas holder, small stowage, step for improved visibility and windshield
- › 2 lockers at fwd hulldecks, accessible through deck hatches with ventilation and ladder, lockable (portside increased with B1 layout)
- › 2 lockers on central pod accessible by deck hatches
- › Locker for stowage of two gas bottles in cockpit
- › Large GRP deckshouse with extension above cockpit including LED lights and optional exterior sound system
- › Deckshouse windows fwd, at sides, to cockpit (both sides) and to flydeck in mineralic glas

## STANDARD SPECIFICATION

### DECK, RIG & SAILS, DECK EQUIPMENT

- › Portlights in deckhouse side windows (one each side) and 2 flush hatches in top of deckhouse fwd of flydeck
- › Aft patio door to saloon with three leaves (two sliding) and folding window on stb in mineralic glas
- › Aft patio door to saloon with three leaves (two sliding) and folding window on stb in mineralic glas
- › Door to fwd cockpit

#### Rig & Sails

- › Rig, anodized aluminium, 2 sets of spreaders with protections, 1 forestay, upper/lower shrouds, diamonds and 2 checkstays, stainless steel 1x19 wire for shrouds and forestay, wind indicator at mast top, painted colour: Signal White (RAL 9607)
- › Manual genoa furler
- › 1 pair of mast steps to gooseneck and footrest for gooseneck
- › Main- (2:1) and genoa halyard
- › 1 mainsail outhaul
- › 3 reefs
- › German mainsheet system
- › 2 main- and genoa sheets lead to helmstation on port

#### Deck Equipment

- › Anchor windlass, electrical, 1600 W
- › Bow anchor bracket with cleat
- › White PVC coated trampolines
- › 2 Lewmar 55 EST EVO electrical halyard winches
- › Lewmar 65 EST EVO electrical mainsail winch
- › Lewmar 45 ST EVO manual halyard winch at mast
- › Genoa tracks incl. cars with pin stop and jammer
- › 2 handrails on coachroof
- › St. st. pulpits with teak seats
- › Transv. beam, painted with seagull striker (colour selection)
- › St. st. pushpits
- › Railing, 750mm height, incl. st. st. stanchions and three guardwires PVC covered
- › 6 st. st. mooring cleats, 500 mm
- › 2 st. st. mooring cleats, 360 mm at transom
- › 6 st. st. anti-chafing protections
- › St. st. swimming ladder on transom
- › Mooring bridle

# STANDARD SPECIFICATION

## INTERIOR

---

### Interior

- › Furniture - Maple Style, Satin Varnish
- › Floorboard - Laminated wood, Silver Oak
- › PVC lining - Pure White
- › Upholstery - Silvertex, colour: Macadamia
- › Technical storage unit in stb companionway
- › Escape hatch in companion way on both sides
- › Heads with thermostatic mixing tap, shower hose and silk-screened shower doors
- › Electric toilet with fresh water flush - cabin layout B1 (Owner´s suite only)
- › 2 electric toilets with fresh water flush - cabin layout B2
- › 2 electric toilets with fresh water flush - cabin layout D1
- › Spring frames and mattresses for beds
- › A1: Sail locker on port
- › B1: Owner's suite on port with: "King size" double island berth (180x 200 cm), huge closet, stowage, seating area, fwd companion-way, head with separate toilet and separate shower stall at bow Crew cabin on stb with: bunk bed, storage, head with sink, toilet and shower and dining area Galley down on stb with: double sink, mixing tap, 130 l 12 V fridge, 4 burner gas stove with oven and waste bin, access to crew cabin
- › C1: Saloon with lounge and dining area, bar and chart table
- › Saloon table, fixed
- › Worktop in galley - Ivory White
- › D1: 2 aft cabins with "Queen size" bed (160x 200 cm), storage and separate head with toilet and separate shower stall

# STANDARD SPECIFICATION

## ELECTRICS & ELECTRONICS, PROPULSION

### Electrics & Electronics

- › 12 V and 230 V electric system with digital switchboard, 230 V shore power and sockets at chart table (1), galley (2), in cabins (1) and heads (1)
- › Tank level gauges and bilge alarm
- › 12 V outlets at chart table (1) and helm station (1)
- › Country Version: EU / AUS
- › Overhead lights in cabins, saloon, galley and heads
- › Courtesy lights in companionway
- › Adjustable light at chart table
- › Reading lights in cabins
- › Navigation lights
- › 2 lights per transom
- › Gel battery set, capacity: 2 x 90 Ah + 4 x 225 Ah
- › Inverter/charger, 12 V / 3.000 W - 150 A, incl. AC panel

### Propulsion

- › 2 Yanmar Engines (Diesel, approx. 75 hp) - saildrive, 3-blade fixed propeller
- › 2 sound-proof and heat insulated engine compartments with aluminium plates, ventilation fans, LED light and access from cockpit by hatches

# STANDARD SPECIFICATION

## SYSTEM

---

### Systems

- › Hydraulic steering system
- › Stainless steel steering wheel with leather cover
- › St. st. emergency tillers
- › Rudder, GRP, balanced
- › Twin electrical engine throttle at helmstation
- › Compass at helmstation
- › 2 fresh water tanks, 2 x 500 l
- › Pressurized water system with st. st. expansion tank, electric shower pumps and hot water boiler, 80 l, 750 W
- › Mixing taps for heads and showers
- › Shower unit at transom, portside, warm-/coldwater
- › Polypropylene blackwater tank, 85 l per head
- › 2 manual bilge pumps with 3-way-valve
- › 4 electric bilge pumps with visual and audible alarm
- › 2 aluminium fuel tanks, 2 x 480 l